

### 8035 Ladies' Lounge Pants

Trendy sweatpants made of organic cotton | High-quality French Terry | 85% combed, ring-spun organic cotton | Attached, elastic waistband with cord | 2 side pockets, 1 back pocket  
Outer fabric (300 g/m<sup>2</sup>): 85% cotton, 15% polyester

### 8036 Men's Lounge Pants

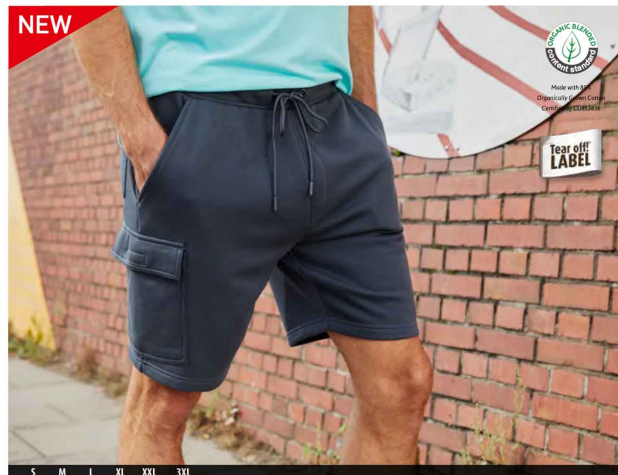
Trendy sweatpants made of organic cotton in cargo style | High-quality French Terry | 85% combed, ring-spun organic cotton | Attached, elastic waistband with cord | 2 side pockets, 1 back pocket | 1 cargo pocket with hook and loop fastener on the right leg  
Outer fabric (300 g/m<sup>2</sup>): 85% cotton, 15% polyester



vanilla

navy

graphite



### 8038 Men's Lounge Shorts

Trendy sweatshorts made of organic cotton, in cargo style | High-quality French Terry | 85% combed, ring-spun organic cotton | Attached, elastic waistband with cord | 2 side pockets, 1 back pocket | 1 cargo pocket with hook and loop fastener on the right leg  
Outer fabric: 85% cotton, 15% polyester



vanilla

navy

graphite



8008

**Men's Basic-T**

Classic T-shirt for men | 100 % combed ring-spun organic cotton | Single Jersey | Round neckline | Sleeve-cuffs with elasthan  
Outer fabric (140 g/m<sup>2</sup>): 100% cotton

S M L XL XXL 3XL

XS S M L XL XXL

8007

**Ladies' Basic-T**

Ladies' T-shirt in classic form | 100% combed ring-spun organic cotton, Single Jersey | Low cut round neckline | Cuffs with elasthan | Slightly waisted | Tear off® - Label  
Outer fabric (120 g/m<sup>2</sup>): 100% cotton



white stone light-yellow acid-yellow yellow gold-yellow orange dark-orange soft-pink



pink red tomato carmine-red-melange grenadine wine coral raspberry sky-blue cobalt royal



mint pacific turquoise light-denim-melange petrol dark-royal navy ash natural grey-heather mid-grey



graphite black black-heather steel-grey brown lime-green fern-green irish-green dark-green khaki olive





XS	S	M	L	XL	XXL
98/104	110/116	122/128	134/140	146/152	158/164

XS	S	M	L	XL	XXL
98/104	110/116	122/128	134/140	146/152	158/164

#### 8007G

#### Girls' Basic-T

Classic T-shirt for girls | 100 % combed ring-spun organic cotton | Single jersey | Round neckline | Sleeve-cuffs with elasthane | Lightly waisted  
Tear off!®-label

Outer fabric (140 g/m<sup>2</sup>): 100% cotton

#### 8008B

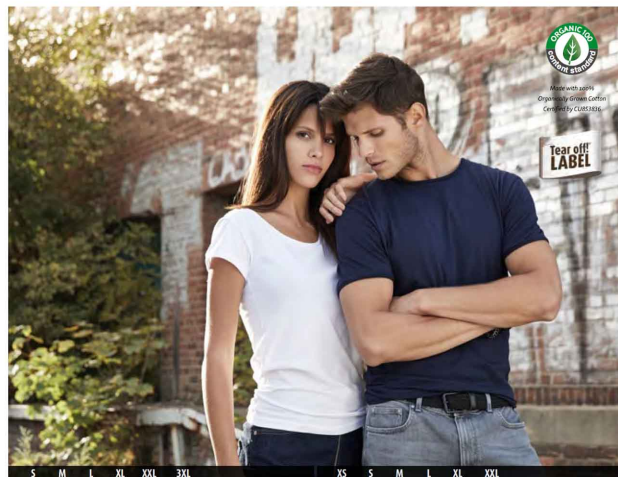
#### Boys' Basic-T



white acid yellow yellow gold-yellow orange pink red wine sky-blue cobalt



royal pacific turquoise dark-royal navy graphite black lime-green fern-green irish-green



Tear off!  
LABEL

S M L XL XXL 3XL

XS S M L XL XXL

#### 8002 Men's-T

Men's T-shirt with trendy roll hem | 100% combed ring-spun organic cotton, Single Jersey | Round neckline and sleeves with roll hem  
Tear off!®-Label  
Outer fabric (140 g/m<sup>2</sup>): 100% cotton



white

red



navy

grey-heather

black

#### 8001 Ladies'-T

Ladies' T-shirt with trendy roll hem | 100% organic combed ring-spun cotton, Single Jersey | Low cut round neckline and sleeves with roll hem  
Slightly waisted | Tear off!® - Label  
Outer fabric (120 g/m<sup>2</sup>): 100% cotton



white

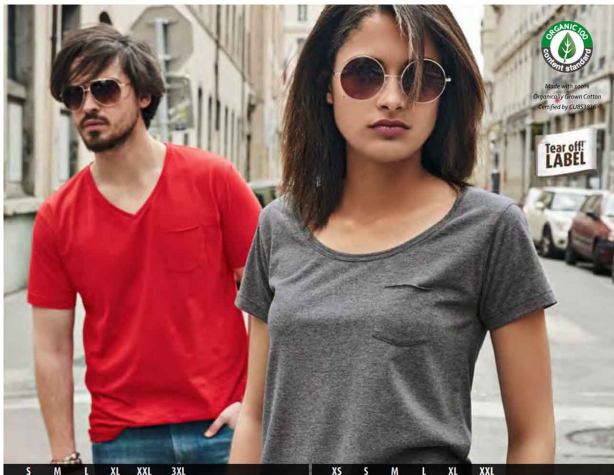
red



navy

grey-heather

black

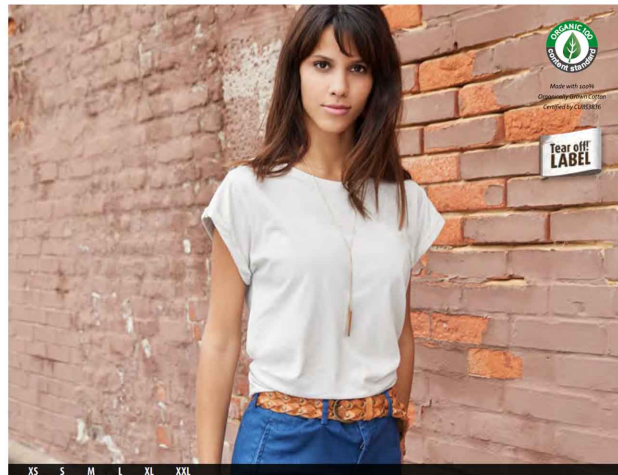


#### 8004 Men's-T Pocket

Men's T-shirt with fashionable breast pocket | 100% combed ring-spun organic cotton, Single Jersey | V-neck with small cuffs | Cuffs with elasthan | Breast pocket with roll hem  
Outer fabric (140 g/m<sup>2</sup>): 100% cotton

#### 8003 Ladies'-T Pocket

Ladies' T-shirt with fashionable breast pocket | 100% combed ring-spun organic cotton, Single Jersey | Low cut round neckline | Cuffs with elasthan | Breast pocket with roll hem  
Outer fabric (120 g/m<sup>2</sup>): 100% cotton



#### 8005 Ladies' Casual-T

Ladies' T-shirt in casual style | 100% combed ring-spun organic cotton, Single Jersey | Low cut round neckline | Cuffs with elasthan | Overcut shoulder | Short roll-up sleeves | Casual fit | Tear off: Ø - Label  
Outer fabric (120 g/m<sup>2</sup>): 100% cotton







Made with 100%  
Organically Grown Cotton  
Certified by GOTS10016

XS S M L XL XXL

## 8017 Ladies' Slub-Top

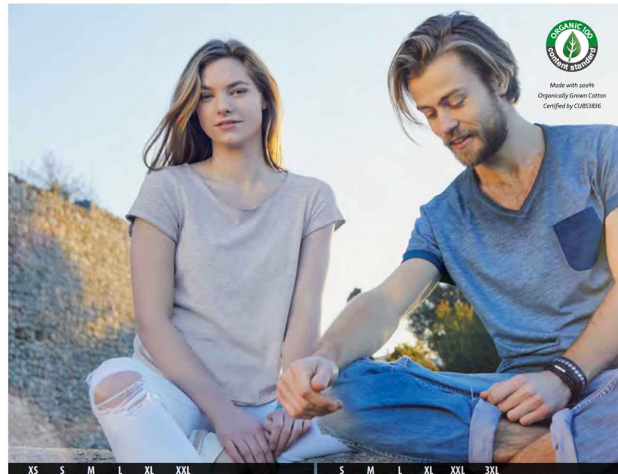
Ladies' tank top in vintage look | Single jersey made of slub yarn and combed ring-spun organic cotton | Elaborate Spray Print technique  
Two-ply roll hem | Narrow bands on neckline and armholes | Lightly waisted  
Outer fabric (130 g/m<sup>2</sup>): 100% cotton



soft-pink chili horizon-blue



denim light-grey graphite dusty-olive



Made with 100%  
Organically Grown Cotton  
Certified by GOTS10016

XS S M L XL XXL 3XL

## 8015 Ladies' Slub-T

Ladies' T-shirt in vintage look | Single jersey made of slub yarn and combed ring-spun organic cotton | Elaborate Spray Print technique |  
Two-ply roll edge on neckline, sleeves and waistband  
Outer fabric (130 g/m<sup>2</sup>): 100% cotton



soft-pink chili horizon-blue



denim light-grey graphite dusty-olive

## 8016 Men's Slub-T

Men's T-shirt in vintage look | Single jersey made of slub yarn and combed ring-spun organic cotton | Elaborate Spray Print technique |  
V-neck, sleeve-cuffs with elasthane  
Outer fabric (150 g/m<sup>2</sup>): 100% cotton

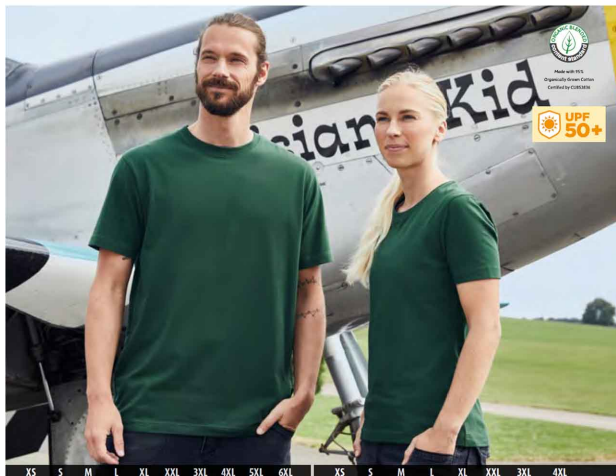


soft-pink chili horizon-blue



denim light-grey graphite dusty-olive





**JN1802**  
Men's BIO Stretch-T Work - SOLID -

T-shirt made of soft elastic single jersey | Combed ring-spun organic cotton, round neckline | Neck band with elasthan, neck tape | Washable at 40°C, suitable for tumble drying | JN1801: lightly waisted  
Outer fabric (180 g/m²): 95% cotton, 5% elastane | Outer fabric (180 g/m²): 85% cotton, 10% viscose, 5% elastane (grey-heather)

**JN1801**  
Ladies' BIO Stretch-T Work - SOLID -



**JN1804**  
Men's BIO Stretch-Longsleeve  
Work - SOLID -

Long-sleeved T-shirt made of soft elastic single jersey | Combed ring-spun organic cotton, round neckline | Neck band with elasthan, neck tape | Washable at 40°C, suitable for tumble drying | JN1803: lightly waisted  
Outer fabric (180 g/m²): 95% cotton, 5% elastane | Outer fabric (180 g/m²): 85% cotton, 10% viscose, 5% elastane (grey-heather)

**JN1803**  
Ladies' BIO Stretch-Longsleeve Work  
- SOLID -





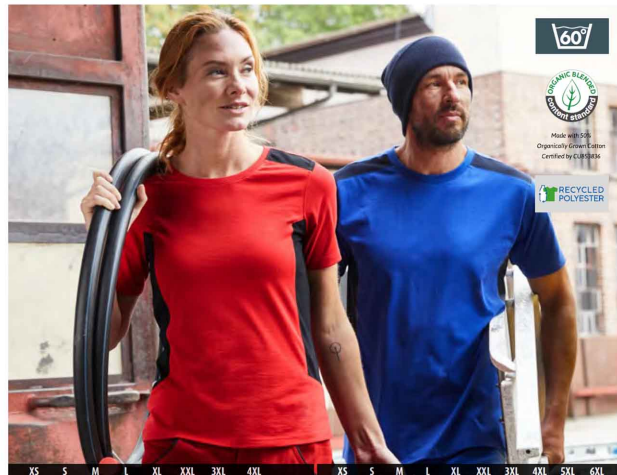


#### JN1807 Ladies' BIO Workwear T-Shirt

Hard-wearing and easy-care T-Shirt | Mixed fabrics: combed ring-spun organic cotton and | polyester for optimum shape retention and washing resistance | Neck band with elasthane, neck tape | Washable at 60°C, suitable for tumble drying | JN1807: V-neck, lightly waisted  
Outer fabric (160 g/m²): 50% cotton, 50% polyester

#### JN1808 Men's BIO Workwear T-Shirt

Hard-wearing and easy-care T-Shirt | Mixed fabrics: combed ring-spun organic cotton and | polyester for optimum shape retention and washing resistance | Neck band with elasthane, neck tape | Washable at 60°C, suitable for tumble drying | JN1808: V-neck, lightly waisted  
Outer fabric (160 g/m²): 50% cotton, 50% polyester



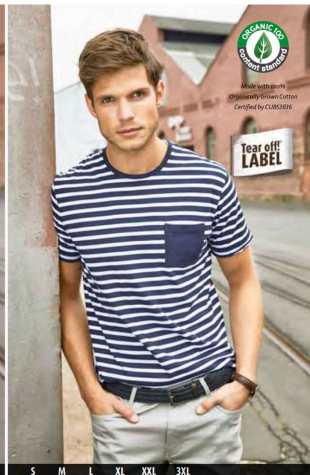
#### JN1823 Ladies' Workwear T-Shirt - STRONG -

Durable, easy care T-shirt with contrasting insets | Material mix of combed, ring-spun organic cotton and recycled polyester for optimum shape retention and washing resistance | Contrasting insets on the side and shoulder | Neck band with elasthane, neck tape | Washable at 60°C, suitable for tumble-drying | JN1823: lightly waisted  
Outer fabric (180 g/m²): 50% cotton, 50% polyester (recycled)

#### JN1824 Men's Workwear T-Shirt - STRONG -

Durable, easy care T-shirt with contrasting insets | Material mix of combed, ring-spun organic cotton and recycled polyester for optimum shape retention and washing resistance | Contrasting insets on the side and shoulder | Neck band with elasthane, neck tape | Washable at 60°C, suitable for tumble-drying | JN1824: lightly waisted  
Outer fabric (180 g/m²): 50% cotton, 50% polyester (recycled)





### 8027 Ladies' T-Shirt Striped

T-shirt in maritime look with breast pocket | 100% combed, ring-spun organic cotton, single jersey, round neck | Two-ply rolled hem on sleeves and waistband | Neckband with elastane | 8027: lightly waisted | Tear off®-label  
Outer fabric (140 g/m<sup>2</sup>): 100% cotton

### 8028 Men's T-Shirt Striped



white/navy red/white



white/navy red/white



atlantic/white navy/white



atlantic/white navy/white



### 8030 Men's Polo Striped

Polo shirt in maritime look with breast pocket | Fine piqué quality made of 100% combed, ring-spun organic cotton | Knitted polo collar | Sleeve cuffs, breast pocket, buttons and button-placket on the inside in contrasting colour | Side slits | 8029: waisted form, 5 buttons | 8030: 3 buttons  
Outer fabric (180 g/m<sup>2</sup>): 100% cotton

### 8029 Ladies' Polo Striped



white/navy red/white



white/navy red/white



atlantic/white navy/white



atlantic/white navy/white



8010  
Men's Basic Polo

Classic poloshirt | Fine piqué made of 100% combed ring-spun organic cotton | Knitted polo collar and sleeve cuffs | Buttons tone in tone, side slits  
Tear off!®-label | 8009: waisted, 4 buttons | 8010: 2 buttons  
Outer fabric (180 g/m²): 100% cotton

8009  
Ladies' Basic Polo



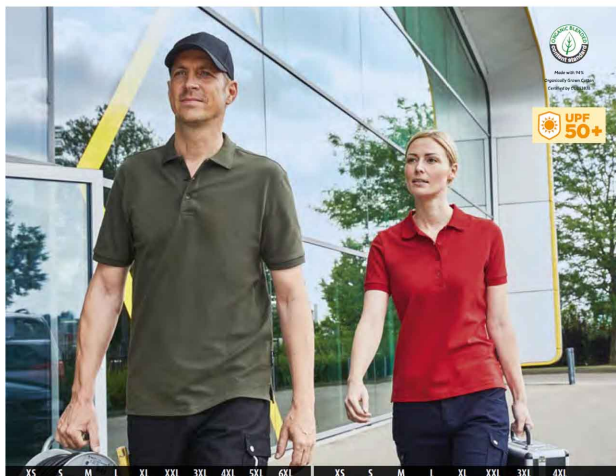
JN874  
Men's BIO Workwear Polo

Easy-care, durable polo shirt | Mixed materials made of combed, ring-spun organic cotton and polyester for optimum shape-retention and washability  
Knitted polo collar and sleeve cuffs | Neck tape | JN873: Button placket with 4 buttons, side slits | JN874: Button placket with 3 buttons | Washable up to 60 degrees, suitable for tumble drying  
Outer fabric (200 g/m²): 50% cotton, 50% polyester

JN873  
Ladies' BIO Workwear Polo







**JN1806**  
Men's BIO Stretch-Polo Work - SOLID -

**JN1805**  
Ladies' BIO Stretch-Polo Work - SOLID -

Polo shirt made of soft elastic pique | Combed ring-spun organic cotton | Knitted polo collar and sleeve-bands, side slits | Washable at 40°C, suitable for tumble drying | JN1805: button placket with 4 buttons, lightly waisted | JN1806: button placket with 3 buttons  
Outer fabric (210 g/m²): 94% cotton, 6% elastane | Outer fabric (210 g/m²): 84% cotton, 10% viscose, 6% elastane (grey-heather)



**JN1825**  
Ladies' Workwear Polo - STRONG -

**JN1826**  
Men's Workwear Polo - STRONG -

Durable, easy care polo shirt with contrasting insets | Material mix of combed, ring-spun organic cotton and recycled polyester for optimum shape retention and washing resistance | Contrasting insets on the side and shoulder | Knitted polo collar, neck tape | JN1826: Button placket with 3 buttons | JN1825: Button placket with 4 buttons | Washable at 60°C, suitable for tumble-drying  
Outer fabric (200 g/m²): 50% cotton, 50% polyester (recycled)





## 8022 Men's Sweat

Classic sweatshirt with raglan sleeves | High-quality French terry. 85% combed, ring-spun organic cotton | Classic round neck, necktape | Collar and sleeve-bands with elasthan | Collar patch | Tear off-label | 8021: lightly washed  
Outer fabric (300 g/m²): 85% cotton, 15% polyester

## 8021 Ladies' Sweat





## 8024 Men's Hoody

Hooded sweatshirt with raglan sleeves | High-quality sweat fabric with roughened inside | 85% combed, ring-spun organic cotton | Two-layer hood with drawcord | Lateral dividing seams at the front, kangaroo pocket | Sleeve-bands with elasthan | Tear off®-label | 8023: lightly waisted  
Outer fabric (300 g/m²): 85% cotton, 15% polyester

## 8023 Ladies' Hoody



white acid-yellow orange rose-melange red



carmine-red-melange burgundy-melange wine glacier-melange cobalt



turquoise light-denim-melange petrol-melange navy ink-melange



ash grey-heather graphite black black-heather



glacier-melange



## 8026 Men's Zip Hoody

## 8025 Ladies' Zip Hoody

## 8026K Children's Zip Hoody

Hooded sweat jacket with zip | High-quality French terry | 85% combed, ring-spun organic cotton | Two-layer hood with drawcord | Lateral dividing seams at the front, kangaroo pocket | Sleeve-bands with elasthan | YKK®-zip | Tear off®-label | 8025: lightly waisted  
Outer fabric (300 g/m²): 85% cotton, 15% polyester



white acid-yellow orange rose-melange red carmine-red-melange burgundy-melange wine glacier-melange cobalt



turquoise light-denim-melange petrol-melange navy ink-melange ash grey-heather graphite black black-heather





### 8031 Bio Sneaker Socks

Classic short socks with a high content of organic cotton | Elastic cuff with lycra® | Flat toe seam | Reinforced toe and heel part

Outer fabric: 75% cotton, 23% polyamide, 2% elastane

### 8032 Bio Socks

Classic socks with a high content of organic cotton | Elastic cuff with lycra® | Flat toe seam | Reinforced toe and heel part

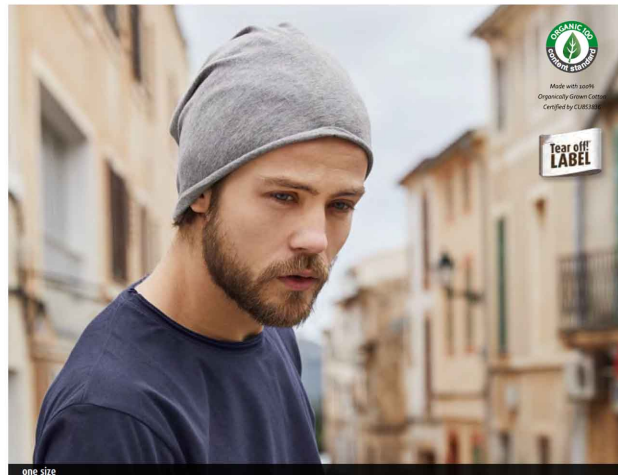
Outer fabric: 75% cotton, 23% polyamide, 2% elastane



white navy black



white navy black



### MB7113 Bio Cotton Beanie

Fashionable beanie in casual style | Narrow roll hem | 100% combed ring-spun organic cotton | Single jersey | Tear off®-label

Outer fabric (120 g/m²): 100% cotton



carmine-red-melange wine light-denim-melange navy  
grey-heather graphite black black-heather



### MB6236 6 Panel Cap Bio Cotton

6 panel cap with unbrushed surface | 6 embroidered ventilation holes | 6 decorative stitching lines on the peak | Laminated front panels | Pleasant to wear thanks to the lined satin sweatband | Hook and loop fastener  
Outer fabric (190 g/m<sup>2</sup>): 100% cotton (organic cotton)



white red burgundy royal turquoise



navy light-grey graphite black lime-green



### MB6237 5 Panel Cap Bio Cotton

5 panel cap with unbrushed surface | 4 embroidered ventilation holes | 6 decorative stitching lines on the peak | Laminated front panel | Pleasant to wear thanks to the lined satin sweatband | Hook and loop fastener  
Outer fabric (190 g/m<sup>2</sup>): 100% cotton (organic cotton)



white red burgundy royal turquoise



navy light-grey graphite black lime-green



### MB6238 5 Panel Sandwich Cap Bio Cotton

5 panel cap with unbrushed surface | 4 embroidered ventilation holes | 6 decorative stitching lines on the peak | Laminated front panel | Pleasant to wear thanks to the lined satin sweatband | Hook and loop fastener  
Outer fabric (190 g/m<sup>2</sup>): 100% cotton (organic cotton)



white/navy red/white burgundy/black royal/white turquoise/white



navy/white light-grey/black graphite/red black/white lime-green/white



Made with 100%  
Organically Grown Cotton  
Certified by CURELBA

### MB7312 Bio Cotton Scarf

Pleasantly warm cotton scarf | Short, fine fringe along the edges of the scarf | Fashionable colourways | Measurements: 180 x 50 cm  
Outer fabric (65 g/m<sup>2</sup>): 100% cotton



chili/natural denim/natural olive/natural



one size

#### MB440 Flannel

Flannel in fashionable design | Pleasantly soft cotton terry, combed ring-spun organic-cotton | Optimum absorbency | Selection of fashionable, bright colours | 15 x 21 cm  
Outer fabric (420 g/m<sup>2</sup>): 100% cotton



one size

#### MB441 Guest Towel

Guest towel in fashionable design | Pleasantly soft cotton terry, combed ring-spun organic-cotton | Optimum absorbency | Selection of fashionable, bright colours | 30 x 50 cm  
Outer fabric (420 g/m<sup>2</sup>): 100% cotton



one size

#### MB442 Hand Towel

Towel in fashionable design | Pleasantly soft cotton terry, combed ring-spun organic-cotton | Optimum absorbency | Selection of fashionable, bright colours | 50 x 100 cm  
Outer fabric (420 g/m<sup>2</sup>): 100% cotton



one size

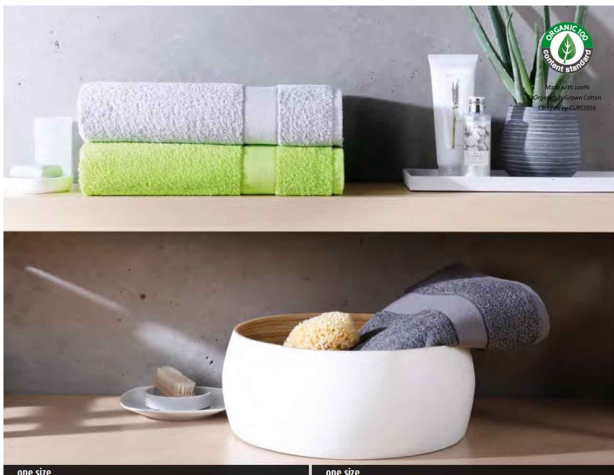
#### MB443 Bath Towel

Bath towel in fashionable design | Pleasantly soft cotton terry, combed ring-spun organic-cotton | Optimum absorbency | Selection of fashionable, bright colours | 70 x 140 cm  
Outer fabric (420 g/m<sup>2</sup>): 100% cotton



silver





#### MB444 Sauna Sheet

Sauna sheet in fashionable design | Pleasantly soft cotton terry, combed ring-spun organic-cotton | Optimum absorbency | Selection of fashionable, bright colours | 70 x 180 cm  
Outer fabric (420 g/m<sup>2</sup>): 100% cotton

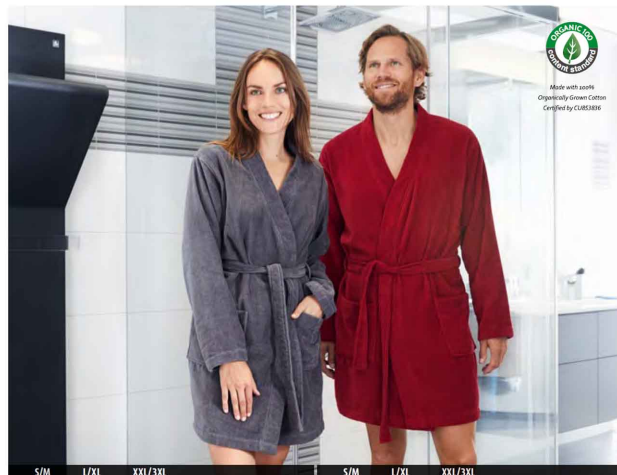


#### MB445 Bath Sheet

Bath towel in fashionable design | Pleasantly soft cotton terry, combed ring-spun organic-cotton | Optimum absorbency | Selection of fashionable, bright colours | 100 x 150 cm  
Outer fabric (420 g/m<sup>2</sup>): 100% cotton



silver



#### MB447 Ladies' Bathrobe

Bath robe in fashionable design | Pleasantly soft cotton terry, combed ring-spun organic-cotton | Optimum absorbency  
Outer fabric (320 g/m<sup>2</sup>): 100% cotton



#### MB448 Men's Bathrobe



# SIZES, QUALITY + CARE

MEN											
	XXS	XS	S	M	L	XL	XXL	3XL	4XL	5XL	6XL
Size		44	46	48	50	52	54	56	58	60	62
Collar size in cm			36/38	39/40	41/42	43/44	45/46	47/48	49/50	51/52	53/54
<b>TROUSERS</b>											
Short size					25	26	27	28			
Size		42	44	46	48	50	52	54	56	58	60
Long size				94	98	102	106	110			
LADIES											
	XXS	XS	S	M	L	XL	XXL	3XL	4XL		
Size		34	36/38	38/40	40/42	42/44	46	48	50		
<b>TROUSERS</b>											
Size		34/36	38	40	42	44	46	48			
KIDS											
	XXS	XS	S	M	L	XL	XXL				
Height in cm		98/104	110/116	122/128	134/140	146/152	158/164				
GLOVES											
			S	M	L	XL					
Circumference in cm			17-19	20-22	23-24.5	25.5-27					
Size			6-7	7.5-8	8.5-9	9.5-10					
SOCKS											
		2,5-5,5	6-7,5	8,5-10	10,5-12						
Shoe size		35-38	39-41	42-44	45-47						
HEAD-WEAR											
		One size	S/M	L/XL							
Head circumference		standard size	56 cm	58 cm							54 cm/from 4 years

## WASHING [TUB]

The numbers in the tab indicate the maximum washing temperatures which must not be exceeded. The bar below the tab requires a more mechanical/gentle treatment (e.g. programme for delicate fabrics) or degreasing washing programmes which are suitable for easy-care and delicate garments. Textiles made of cotton or mixed fibres should be pulled into shape when call-wet. We recommend that textiles with prints or embroideries should only be washed on the reverse at a maximum of 40 degrees in order not to impair the quality of the print or embroidery.



## DRY CLEANING [CLEANING DRUM]

The letters are intended for the textile cleaner. They indicate the possible solvents. The bar below the circle requires cleaning under limited mechanical strain, with a limited amount of moisture and at a medium temperature. Textiles with prints or embroideries should not be dry cleaned.



## IRONING [IRON]

The dots indicate the temperature scale of the iron. Textiles with prints or embroideries should only be ironed on the reverse.



## TUMBLE DRYING [TUMBLE-DRYER]

The dots indicate the drying-grades of the tumble-dryer. Textiles with transfer prints must not be tumble-dried.



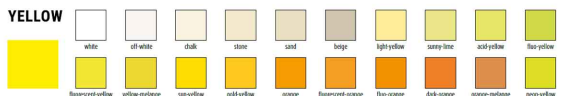
## BLEACHING [TRIANGLE]

This symbol shows the textile cleaner whether the garment may be bleached or not.



# COLORS

## YELLOW



## RED



## BLUE



## BROWN



## GREEN



**Colour Mass**  
Due to different batch qualities there might be slight colour differences.  
There might also be slight colour differences within a size breakdown which have to be accepted.



JN 506 COLOUR GUIDE  
see page 621