



# KARIBAN

## PREMIUM COLLECTION

### FRENCH ELEGANCE

Image clothing must also be **quality clothing** and **trendy**. That's why Kariban created its Premium Collection of different pieces:

- Fitted cups and premium Supima® cotton for t-shirts and polos, whose fibers are softer, stronger and longer. Supima® is a registered trademark and a pledge of quality for fabrics made from American Pima cotton.
- Trendy pieces: light trench coat in taffeta finish, comfortable and durable coated jeans, premium chino with a sleek finish. In 2020, the new **K748**, **K749** or **K762** skirts are entering the Collection.



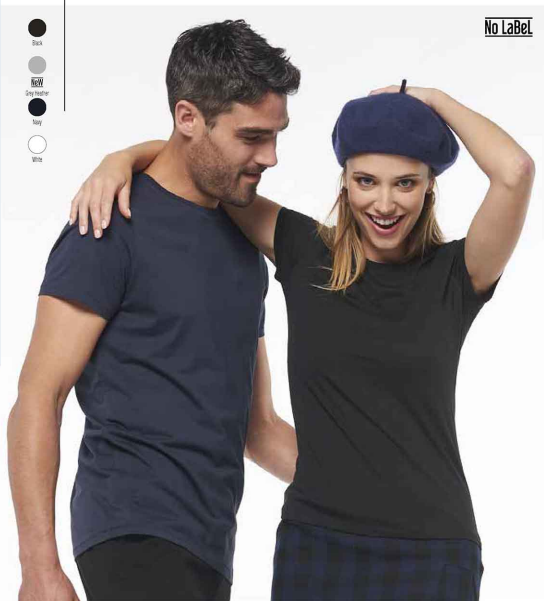
## HIGH-END ESSENTIALS FOR A SOBER LOOK

### SUPIMA® CREW NECK SHORT-SLEEVED T-SHIRTS

160 gsm • 100% cotton. Jersey knit fabric in Supima® cotton. Extremely fine and high-quality fabric. Silky and pleasant hand feel. Straight fit. Crew neckline with matching taped neck. Decorative seam finish at cuffs and hem. No brand label at neck, only size tag for easy relabelling.

No Label

Black  
Grey  
Grey heather  
Navy  
White



### K3000

MEN CREW NECK  
S - M - L - XL - XXL - 3XL

50

### K3001

LADIES CREW NECK  
XS - S - M - L - XL - XXL

50

## HIGH-QUALITY SUPIMA COTTON®

Supima® is a trademark and guarantee of quality for fabrics made from American Pima cotton. Kariban revisits its essentials with one of the world's most refined and resistant cotton.

### SUPIMA® V-NECK SHORT-SLEEVED T-SHIRTS

160 gsm • 100% cotton. Jersey knit fabric in Supima® cotton. Extremely fine and high-quality fabric. Silky and pleasant hand feel. Straight fit. Crew neckline with matching taped neck. Decorative seam finish at cuffs and hem. No brand label at neck, only size tag for easy relabelling.

No Label

Black  
Grey  
Grey heather  
Navy  
White



### K3002

MEN V-NECK  
S - M - L - XL - XXL - 3XL

50

### K3003

LADIES V-NECK  
XS - S - M - L - XL - XXL

50

KARIBAN  
PREMIUM  
COLLECTION



**SUPIMA®  
SHORT SLEEVE  
POLO T-SHIRT**

220 gsm • 100% cotton. Pique knit in Supima® cotton. Extremely fine and high-quality fabric. Silky and pleasant hand feel. Straight fit. Ribbed collar with decorative contrasting taped neck. Pocket with 2 genuine mother-of-pearl buttons (men) and Pocket with 3 genuine mother-of-pearl buttons (women).

Decorative seam finish at hem. Ribbed cuffs. No brand label at neck, only size tag for easy relabeling.



**K2001**

LADIES  
XS - S - M - L - XL - XXL

[20]

**K2000**

MEN  
S - M - L - XL - XXL - 3XL

[20]

No Label

Nw

**NEW  
FOR WOMEN**

**K749**

LADIES' ABOVE-THE-ANKLE TROUSERS

245 gsm • 98% cotton twill/2% elastane. Enzyme washed fabric for optimal comfort. Above-the-ankle cut with side slit at the hem. 2 Italian side pockets and 1 ticket pocket. 2 back pockets with piping and reinforced seams, only decorative one on white. Buttoned and zip fastening. Waistband with belt loops. Modern style. This product has been specially treated and appears intentionally aged. This manufacturing process results in colour variations between products and makes each piece unique.

34 - 36 - 38 - 40 - 42 - 44 - 46 - 48

[20]



**K762**

CHINO SKIRT

260 gsm • 97% cotton/3% elastane. Enzyme washed twill fabric for added wash resistance, peach skin-finish for a soft handfeel. 2 Italian side pockets and 1 ticket pocket. 2 back pockets with piping and reinforced seams, only decorative one on white. Zip and button fastening. Waistband with belt loops. Back slit. This product has been specially treated and appears intentionally aged. This manufacturing process results in colour variations between products and makes each piece unique.

34 - 36 - 38 - 40 - 42 - 44 - 46 - 48

[20]



MORE CHINOS PANTS  
P. 190 - 193



Nw

KARIBAN  
PREMIUM  
COLLECTION



## ESSENTIALS FOR AN ACTIVE DAILY



### K6150

#### MEN'S LIGHTWEIGHT TRENCHCOAT

160 gsm • 100% polyester. Water repellent 300T taffeta fabric. Shirt collar. Metal zip fastening concealed beneath shrouded placket. 2 decorative shrouded side pockets. Lining on the entire front and half-back only. 2 buttoned inner pockets and 1 mobile phone pocket. Outer collar stand and inner pockets in coated decorative fabric. Press-stud tab on cuffs. Invisible zip access for decoration.

S - M - L - XL - XXL - 3XL

10



No Label

### K747

#### MEN'S PREMIUM JEANS

98% cotton / 2% elastane. Coated fabric. Zip fastening and metal button. 2 slant front pockets and ticket pocket. 2 patch back pockets. Pocket bags in decorative fabric. Contrasting seams. Waistband with belt loops. This product has been specially treated and appears intentionally aged. The manufacturing process results in colour variations between products and makes each piece unique. No brand label, only size tag for easy rebelling.

28 UK (38) - 30 UK (40) - 32 UK (42) - 34 UK (44) - 36 UK (46) - 38 UK (48) - 40 UK (50) - 42 UK (52) - 44 UK (54)

20



### K748

#### MEN'S PREMIUM CHINO

260 gsm • 97% cotton/3% elastane. Enzyme washed twill fabric for added wash resistance, peach skin finish for a soft handfeel. Modern style. 2 Italian side pockets, including 1 coin pocket and 1 ticket pocket. 2 back pockets with piping and reinforced seams. Zip and button fastening. Waistband with belt loops and decorative inner elasticated band. This product has been specially treated and appears intentionally aged. This manufacturing process results in colour variations between products and makes each piece unique.

28 UK (38) - 30 UK (40) - 32 UK (42) - 34 UK (44) - 36 UK (46) - 38 UK (48) - 40 UK (50) - 42 UK (52) - 44 UK (54)

20



New



KARIBAN  
PREMIUM  
COLLECTION

