

SHIRTS AND BLOUSES

ELEVATE YOUR LOOK

First impressions are very important in business, so make sure that your team looks the part with a range of collared and casual shirts.

Discover men's and women's styles with long and short sleeve options across a choice of colours, fabrics and fits.





TAILORED
FIT

EASY
CARE

THE ORIGINAL POPLIN SHIRT

Offering quality, value and choice

Long Sleeve Poplin Shirt • 65% Polyester, 35% Cotton, 105gsm, 27 colours

PR200 Men's: Formal collar styling, Left chest open Mitred pocket, Double button fastening on the cuff • Sizes: 14.5"/ 37cm – 23"/ 56cm*

PR300 Women's: Soft collar styling, Rounded bottom hem, Styled with bust and back darts • Sizes: 6/2XS – 30/8XL*

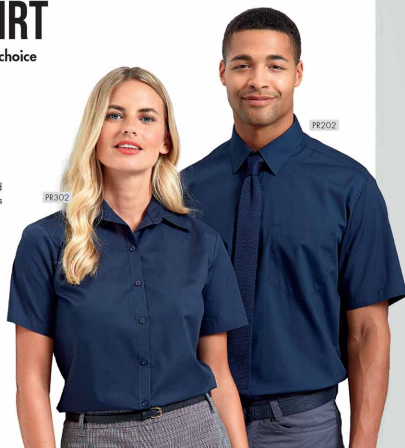
Short Sleeve Poplin Shirt • 65% Polyester, 35% Cotton, 105gsm, 27 colours

PR202 Men's: Formal collar styling, Left chest open Mitred pocket, Self coloured buttons • Sizes: 14.5"/ 37cm – 23"/ 56cm*

PR302 Women's: Soft collar styling, Rounded bottom hem, Styled with bust and back darts • Sizes: 6/2XS – 30/8XL*

* Men's sizes 20"/ 50cm, 21"/ 52cm, 22"/ 54cm and 23"/ 56cm only available in selected colours

* Women's sizes 28/ 70L and 30/ 80L only available in selected colours



PR302

PR200

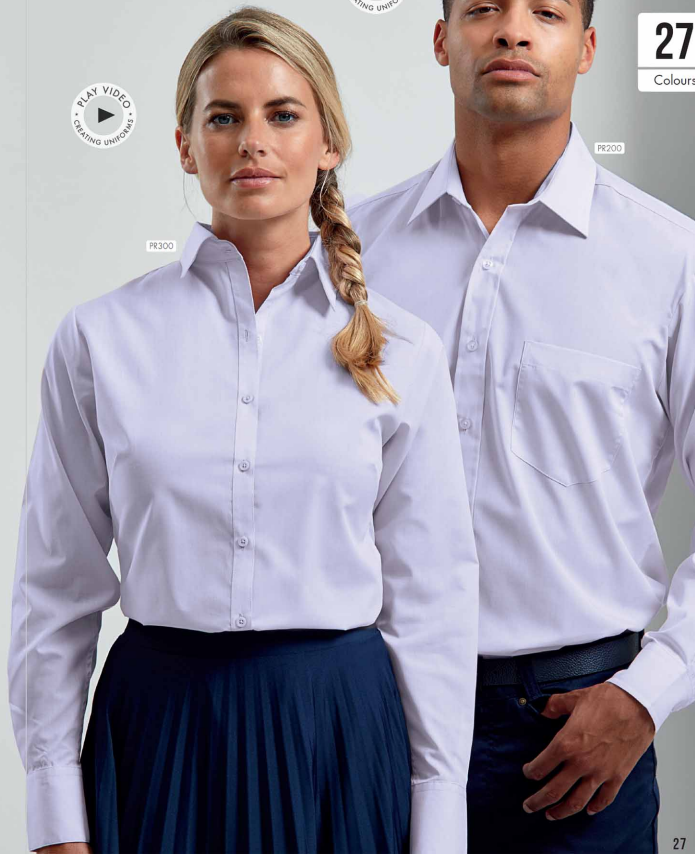


27

Colours

PR200

PR300



'GRANDAD' SHIRT



Banded Collar 'Grandad' Long Sleeve Shirt • 65% Polyester, 35% Cotton, 115gsm, Colour: White

PR288 Men's: Classic banded 'Grandad' collar with top button fastening, Double button cuff • Sizes: XS/30" – 3XL/54"

PR358 Women's: Double button cuff and sleeve guard, Bust back darts, Pearled buttons • Sizes: XS/8 – 2XL/18



PR305 Women's Three-Quarter Sleeve Blouse • Soft collar styling, Three-quarter sleeves, Styled with bust and back darts • 65% Polyester, 35% Cotton, 105gsm/115gsm White • Sizes: 6/2XS - 26/6XL (Size 6/2XS in Black & White only) • 7 colours



TAILORED
MODERN
FIT

PR204 Men's Long Sleeve Slim-Fit Poplin Shirt • Formal collar styling, Double button fastening on the cuff, Fitted style • 65% Polyester, 35% Cotton, 105gsm • Sizes: 14.5"/37cm - 17.5"/44.5cm • 4 colours



SLIM
FIT



MODERN
FIT
STRETCH

PR244

PR344



Stretch-Fit Cotton Poplin Long Sleeve Shirt • 97% Cotton, 3% Elastane, 115gsm, 4 colours

PR244 Men's: Seamless placket, Cutaway collar, Two button adjustable cuff • Sizes: XS/30" – 4XL/58"

PR344 Women's: Seamless placket, Styled with bust and back darts, Two button adjustable cuff • Sizes: XS/8 – 3XL/20



PREMIER
UNIFORMS THAT WORK FOR YOU

STRETCH-FIT POPLIN

Stretch-Fit Cotton Poplin Short Sleeve Shirt • 97% Cotton, 3% Elastane, 115gsm, 4 colours

PR245 Men's: Seamless placket, Cutaway collar, Soft and stretchy fabric • Sizes: XS/30" – 4XL/58"

PR345 Women's: Seamless placket, Styled with bust and back darts, Soft and stretchy fabric • Sizes: XS/8 – 3XL/20



PR245

PR345



SUPREME POPLIN

For a sharper silhouette

Short Sleeve Supreme Poplin Shirt • 65% Polyester, 35% Cotton, 125gsm, 3 colours

PR209 Men's: Offering a heavier fabric construction, Formal collar styling, Two button fastening on the collar stand • Sizes: 14.5"/ 37cm – 19"/48cm

PR292 Women's: Offering a heavier fabric construction, Styled with bust and back darts, Two button fastening on the collar stand • Sizes: 8/XS – 26/6XL

Long Sleeve Supreme Poplin Shirt • 65% Polyester, 35% Cotton, 125gsm, 3 colours

PR207 Men's: Offering a heavier fabric construction, Formal collar styling, Two button fastening on the cuff • Sizes: 14.5"/ 37cm – 19"/48cm

PR302 Women's: Offering a heavier fabric construction, Styled with bust and back darts, Two button fastening on the cuff • Sizes: 8/XS – 26/6XL



MODERN
FIT

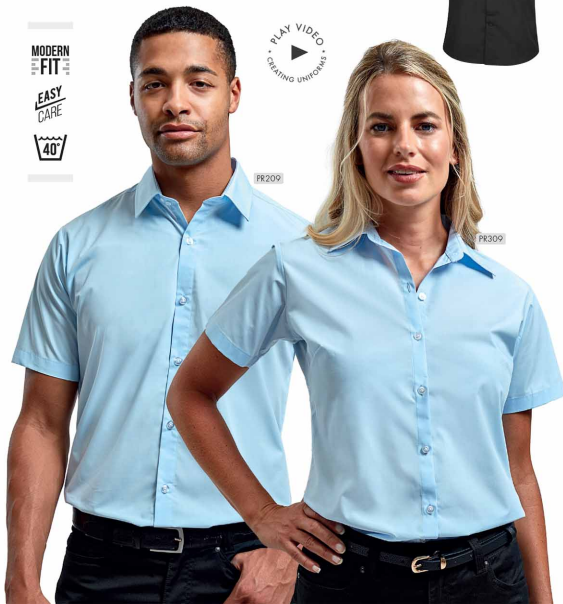
EASY
CARE

40°



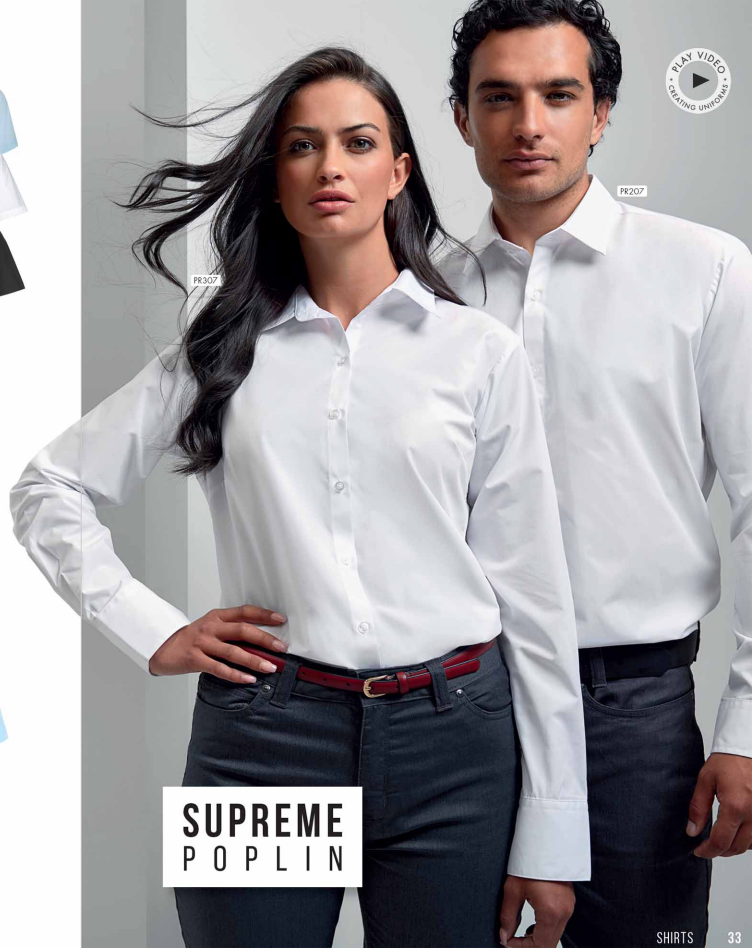
PR209

PR302

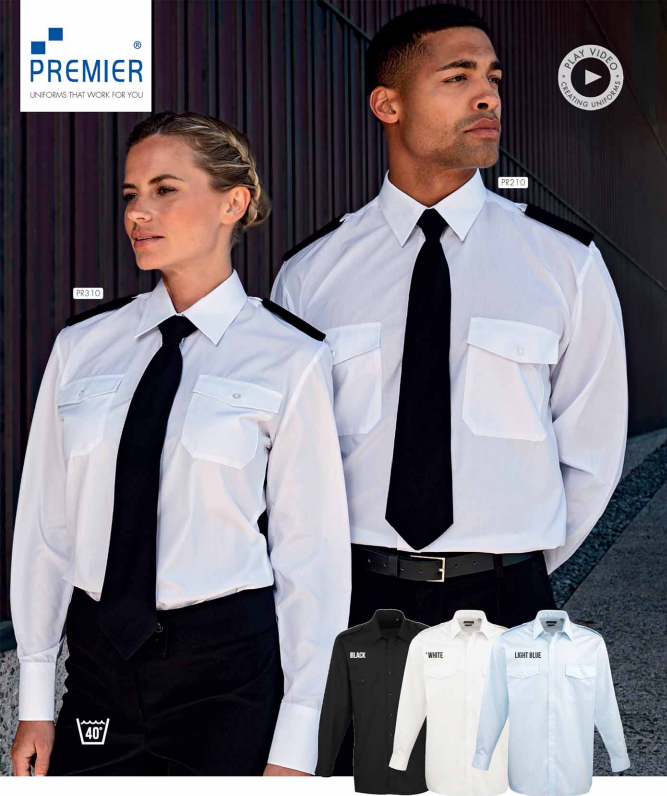


PR307

PR207



SUPREME
POPLIN



SECURITY SHIRTS

Long Sleeve Security Shirt • Formal collar styling, Two Mitred button down chest pockets, tabs for application of Epaulettes on the shoulders • 65% Polyester, 35% Cotton.

PR210 Men's: 105gsm, 3 colours • Sizes: 14.5"/37cm – 19"/48cm

PR310 Women's: 115gsm, *1 colour • Sizes: 8/XS – 26/6XL

CLASSIC FIT

Short Sleeve Security Shirt • Formal collar styling, Two Mitred button down chest pockets, Tabs for application of Epaulettes on the shoulders • 65% Polyester, 35% Cotton.

PR212 Men's: 105gsm, 3 colours • Sizes: 14.5"/37cm – 19"/48cm

PR312 Women's: 115gsm, *2 colours • Sizes: 8/XS – 26/6XL



SECURITY ACCESSORIES

PR203 Work Tie • Plain colour styling, Blade width 3.25"/8cm • 100% Polyester • Wipe clean only • 6 colours



PR710 Clip-on Work Tie • Clip-on version of PR203, Steel clip attachment, Blade width 3.25"/8cm • 100% Polyester • Wipe clean only • 6 colours



PR713 Epaulettes • Adjustable tear release fastening, Embroidery area 9cm x 5cm • 100% Polyester • Wipe clean only • 2 colours





Signature OXFORD

- Highly versatile shirts for corporate or casual occasions.
- Favoured for its raised basket-weave appearance.
- Cotton for softness and polyester for durability.
- Button-down collar for classic styling.
- Offering a flattering fit which retains its shape wash after wash.



OXFORD STRIPE

Cotton Rich Oxford Stripes Shirt • 60% Cotton, 40% Polyester, 135gsm, 5 colours

PR238 Men's: Classic button-down collar, Contrast coloured inner neckband and cuff, Two button adjustable cuff • Sizes S/34" – 3XL/54"

PR338 Women's: Button-down collar on the underside, Contrast coloured inner neckband and cuff, Two button adjustable cuff • Sizes: XS/8 – 2XL/18





Long Sleeve Signature Oxford Shirt • 70% Cotton, 30% Polyester, 135gm, 4 colours

PR234 Men's: Button-down collar, Left chest open mitred pocket, Double button cuff • Sizes: 14.5"/ 37cm – 19"/ 48cm

PR334 Women's: Soft collar styling, Rounded bottom hem, Double button cuff • Sizes: 8/XS – 26/6XL



Short Sleeve Signature Oxford Shirt • 70% Cotton, 30% Polyester, 135gm, 4 colours

PR234 Men's: Button-down collar, Left chest open mitred pocket, Rounded bottom hem • Sizes: 14.5"/ 37cm – 19"/ 48cm

PR334 Women's: Soft collar styling, Rounded bottom hem, Bust and back darts • Sizes: 8/XS – 26/6XL

Signature
OXFORD

'MAXTON' CHECK LONG SLEEVE SHIRT

'Maxton' Check Long Sleeve Shirt • Button-down collar on the underside, Soft collar styling, Single button cuff • 65% Polyester, 35% Cotton Yarn Dyed Poplin, 110gsm, 5 colours.

PR591 Men's sizes: S/34" – 3XL/54" • **PR592** Women's sizes: XS/8 – 2XL/18



MODERN
FIT

EASY
CARE

Styled with PR560 & PR570
Chino Jeans, page 57



PR252

PR352





Short Sleeve Gingham Shirt • 100% Cotton Yarn Dyed Poplin, 11.5gsm, 4 colours

PR221 Men's: Soft collar styling, Curved hem, Modern fit • Sizes: XS/30" – 3XL/54"

PR321 Women's: Soft collar styling, Curved hem, Styled with bust and back darts • Sizes: XS/8 – 3XL/20

GINGHAM COTTON SHIRTS

Long Sleeve Gingham Shirt • 100% Cotton Yarn Dyed Poplin, 11.5gsm, 4 colours

PR220 Men's: Soft collar styling, Two button adjustable cuff, Modern fit • Sizes: XS/30" – 3XL/54"

PR320 Women's: Soft collar styling, Two button adjustable cuff, Styled with bust and back darts • Sizes: XS/8 – 3XL/20



MODERN FIT



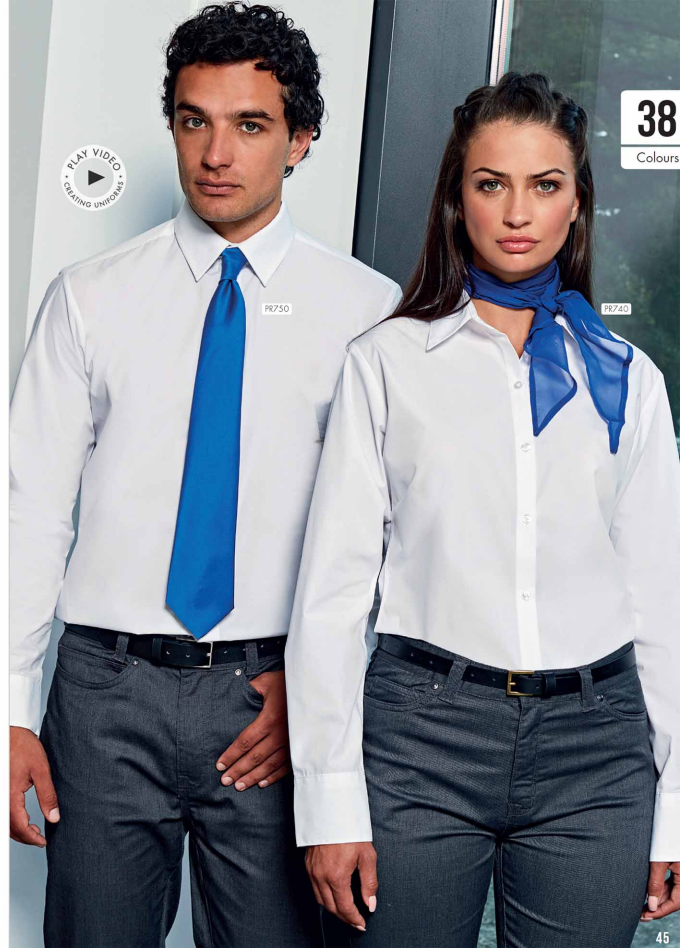
TIES AND SCARVES



PR750 'Colours Collection' Satin Tie • Blade width 3.34"/8.5cm,
Length 57"/144cm • 100% Polyester • 40°C wash • 38 colours

PR740 'Colours Collection' Chiffon Scarf • Lightweight chiffon, Width 6.5"/
16.5cm, Length 38.5"/98cm • 100% Polyester • Handwash • 38 colours

PR755 'Colours Collection' Clip-on Satin Tie • Clip-on tie, Steel clip attachment,
Blade width 3.34"/8.5cm • 100% Polyester • Handwash • 28 colours*



38

Colours

PR740

PR750

PR755

18

Colours



MIX AND MATCH IN COLOUR



P6785 'Colours Originals' Clip-on Fashion Tie • Clip-on tie, Steel clip attachment, Blade width 4"/10cm, Length 18"/47cm • 100% Polyester • Handwash • 18 colours

P6780 'Colours Originals' Plain Business Scarf • Width 10"/25cm, Length 55"/140cm, • 100% Polyester • Handwash • 18 colours

P6783 'Colours Originals' Fashion Tie • Matt appearance, Blade width 4"/10cm, Length 57"/144cm • 100% Polyester • 40°C wash • 18 colours

P6780 P6781 P6783 P6787
Patterned Ties • Blade width 3"/7.5cm, Length 57"/144cm • 100% Polyester • Handwash



P6787 Puppy Tooth



P6780 Micro Waffle



P6783 Waffle Stripe



P6781 Micro Dot



TIES AND BOW TIES



PR782 Double Stripe

Blade width 3"/7.5cm, Length 57"/144cm • 100% Polyester • Handwash



PR784 Sports Stripe



PR785 Bow Tie • Satin weave
bow tie, Hook and bar fastening
• 100% Polyester • Wipe clean
• Colour: Black



PR793 Slim Tie • Satin weave, Blade width 2"/5cm, Length 58"/147cm • 100% Polyester • Wipe clean only

SKINNY TIES



PR792 Slim Knitted Tie • Blade width 2"/5cm, Length 58"/147cm • 100% Polyester • Handwash



KNITWEAR

A collection of knitwear that complements our range of shirts and blouses perfectly. Contemporary v-neck styles are made with cotton-rich yarns for a soft and comfortable layer for staff.





CHAMBRAY SHIRT ORGANIC & FAIRTRADE CERTIFIED

Garments that display the Fairtrade Cotton® mark are made from cotton that is Fairtrade certified. This certification means cotton has been traded, audited and sourced from Fairtrade producers.

Chambray Shirt - Organic & Fairtrade Certified • Two chest pockets with combined pen pocket to the left • Double button cuff for adjustment with a single button sleeve guard • Button-down collar on the underside • 100% Organic Cotton, Fairtrade Certified, 160gsm, 2 colours
PR247 Men's sizes: S/34" - 3XL/54" • **PR347** Women's sizes: XS/6 - 3XL/20





PR222

PR322

JEAN STITCH DENIM SHIRTS

Jean Stitch Denim Shirt • 100% Cotton Ring Spun Denim, 155gm, 2 colours

PR222 Men's: Contrast stitch details, Left chest button-down chest pocket, Buttoned cuff and sleeve guard •
Sizes: XS/30" – 3XL/54"

PR322 Women's: Contrast stitch details, Two button-down chest pockets, Buttoned cuff and sleeve guard •
Sizes: XS/8 – 3XL/20



MODERN
FIT



'GINMILL' CHECK SHIRTS

MODERN
FIT



'Ginmill' Check Long Sleeve Cotton Shirt • Roll-sleeve option with button fastening on the upper arm, Narrow soft collar styling, Curved hem • 100% Cotton Yarn Dyed Poplin, 115gsm, 1 colour.

PR254 Men's sizes: S/34" – 3XL/54" • **PR354** Women's sizes: XS/8 – 2XL/18



• Soft collar styling

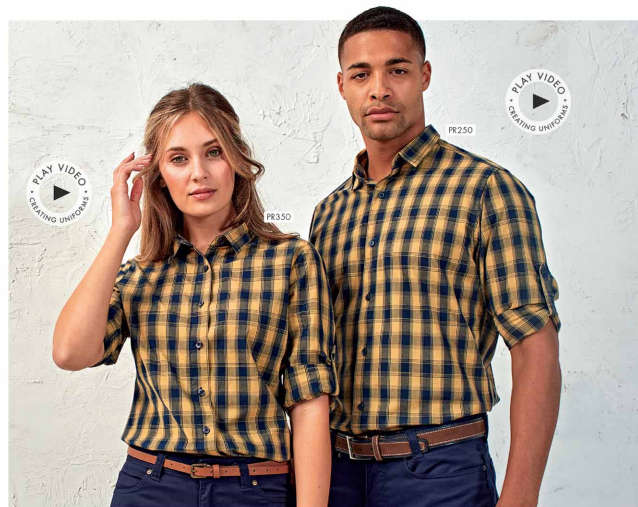


'MULLIGAN' CHECK SHIRTS

PREMIER
UNIFORMS THAT WORK FOR YOU

'Mulligan' Check Long Sleeve Shirt • Roll-sleeve option with button fastening on the upper arm, Narrow soft collar styling, Curved hem • 100% Cotton Yarn Dyed Poplin, 115gsm, 4 colours.

PR250 Men's sizes: S/34" – 3XL/54" • **PR350** Women's sizes: XS/8 – 2XL/18



• 100% Cotton Yarn Dyed Poplin fabric

• Roll-sleeve option with button and tab fastening



ROLL-SLEEVE BAR SHIRT

Roll-Sleeve Poplin Shirt • Button fastening on upper arm, Left chest vented pocket, Soft collar styling • 65% Polyester, 35% Cotton, 105gsm, 1 colour.

PR208 Men's sizes: S/34" – 2XL/50" • **PR308** Women's sizes: XS/8 – 2XL/18

**TAILORED
FIT**



'CROSS-DYE' BAR SHIRT

Roll-Sleeve 'Cross-Dye' Poplin Shirt
• 65% Polyester, 35% Cotton,
105gsm, 2 colours

PR217 Men's: Soft collar styling, Cross-dye textured fabric appearance, Roll-up sleeve with button fastening on the upper arm • Sizes: XS/30" – 3XL/54"

PR317 Women's: Soft collar styling, Cross-dye textured fabric appearance, Bust and back darts • Sizes: XS/8 – 3XL/20



• Roll-up sleeve with button fastening



• Left chest vented pocket

• Roll-up sleeve



WAISTCOATS

FOR A REFINED SERVICE

Hospitality Waistcoat • 65% Polyester, 35% Cotton, 195gsm, Colour: Black

PR620 Men's: Self-fabric back, Two functional watch pockets, Five button fastening • Sizes: S/36" – 2XL/52"

PR621 Women's: Self-fabric back, Two functional watch pockets, Four button fastening • Sizes: S/10 – 2XL/18

Lined Polyester Waistcoat • 100% Polyester, 185gsm, Colour: Black

PR622 Men's: Satin back with adjuster, Two functional watch pockets, Five button fastening • Sizes: 2XS/30" – 2XL/52"

PR623 Women's: Satin back with adjuster, Two functional watch pockets, Four button fastening • Sizes: 2XS/6 – 2XL/18



HERRINGBONE WAISTCOAT

Herringbone Waistcoat • Satin lining to the underside and reverse, Lapel collar, Adjusting buckle on the back • 50% Wool, 45% Polyester, 5% mixed fibres, 300gsm, 3 colours.

PR628 Men's sizes: XS/32" – 2XL/52"

PR629 Women's sizes: XS/8 – 2XL/18

• Brown Check

• Charcoal

• Navy



Styled with PR258 & PR358 'Banded Collar' 'Grandad' Shirts, page 28

SIZING

MODERN
FIT

TAILORED
FIT

CLASSIC
FIT

Slim
Fit

PREMIER
UNIFORMS THAT WORK FOR YOU

WOMEN'S SHIRTS / POLOS / TEES / KNITWEAR / CHEF'S JACKETS / BEAUTY TUNICS & OUTERWEAR

Coll size	2XS	XS	S	M	L	XL	2XL	3XL	4XL	5XL	6XL	7XL	8XL
Size	6	8	10	12	14	16	18	20	22	24	26	28	30
Bust to fit *	31	33	35	37	39	41	43	45	47	49	51	53	55
Bust to fit cm	79	84	89	94	99	104	109	114	119	124	129	134	139

WOMEN'S WAISTCOATS - PR621, PR623 & PR626

Coll size	2XS	XS	S	M	L	XL	2XL
Size	6	8	10	12	14	16	18
Bust to fit *	27	29	32	34	37	40	44
Bust to fit cm	72	80	88	96	104	112	120

WOMEN'S TROUSERS, CHINOS & SHORTS - PR514, PR530, PR536, PR570 & PR572

Coll size	XS	S	M	L	XL	2XL	3XL	4XL	5XL
Size	8	10	12	14	16	18	20	22	24
Waist to fit *	24	26	28	30	32	34	36	38	40
Waist to fit cm	59	64	69	74	79	84	89	94	99

MEN'S COLLARED SHIRTS

PR200, PR202, PR204, PR207, PR209, PR210, PR212, PR234 & PR236

Coll size	S	S/M	M	M/L	L	L/XL	XL	XL/2XL	2XL	2XL/3XL	3XL	4XL	5XL	6XL
Collar "	14½	15	15½	16	16½	17	17½	18	18½	19	20	21	22	23
Collar cm	37	38	39½	41	42	43	44½	46	47	48	50	52	54	56
Chest to fit *	34	36	38	40	42	44	46	48	50	52	54	58	62	66
Chest to fit cm	87	92	96	102	107	111	117	122	127	132	137	147	157	167

MEN'S SOFT COLLARED SHIRTS, TEES, CHEF'S JACKETS, KNITWEAR & ARTISAN FLEECES

PR206, PR217, PR218, PR219, PR220, PR221, PR222, PR238, PR244, PR246, PR247, PR250, PR262, PR264, PR268, PR649, PR803 & PR823

Coll size	2XS	XS	S	M	L	XL	2XL	3XL	4XL	5XL
Chest to fit *	28	30	34	38	42	46	50	54	58	62
Chest to fit "	74	77	87	96	107	117	126	136	146	156

MEN'S WAISTCOATS - PR620, PR622 & PR625

Coll size	2XS	XS	S	M	L	XL	2XL
Chest to fit *	30	32	36	40	44	46	52
Chest to fit cm	66	76	86	96	106	116	126

STUDDO POLO, COOLPLUS POLO, SPUN DYED POLO, ESSENTIAL POLOS, ZIP-THROUGH SWEAT, SOFTSHELLS & RECYCLED LIGHTS - PR612, PR630, PR631, PR695, PR697, PR698, PR610, PR611, PR614 & PR617.

Coll size	XS	S	M	L	XL	2XL	3XL	4XL	5XL	6XL
Chest to fit *	33	35	38	41	44	47	50	53	56	59
Chest to fit cm	83	89	96	104	112	119	122	134	142	150

MEN'S COOLCHECKER POLO SHIRTS - PR615, PR617 & PR618

Coll size	XS	S	M	L	XL	2XL	3XL	4XL	5XL
Chest to fit *	33	35	37	39	41	44	46	48	51
Chest to fit cm	83	89	94	99	104	112	116	122	130

STUDDO POLO SHIRT - PR610

Coll size	S	M	L	XL	2XL	3XL
Chest to fit *	34	38	42	46	50	52
Chest to fit cm	92	100	108	116	124	132

MEN'S TROUSERS, CHINOS & SHORTS - PR520, PR560, PR562 & PR564

Coll size	XS	S	M	L	XL	2XL	3XL	4XL
Waist to fit *	30	32	34	36	38	40	42	44
Waist to fit cm	76	80	86	92	96	100	106	110

UNISEX CHEF'S TROUSERS - PR552, PR553, PR564, PR555 & PR556

Coll size	XS	S	M	L	XL	2XL	3XL	4XL
Waist to fit *	28-30	32-34	34-36	36-38	38-40	42-44	44-46	46-48
Waist to fit cm	71-76	81-86	86-91	91-96	96-101	106-111	111-116	116-126

