

BEAUTY & SALONWEAR

YOUR TIME TO SHINE

When clients attend their beauty and well-being appointments, they expect to be greeted by well-presented staff.

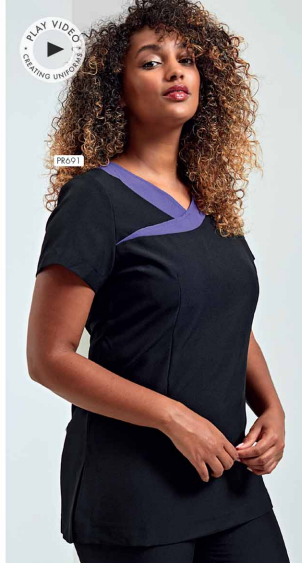
Discover a collection of stunning beauty tunics to help elevate your look, along with essential waterproof styles and suitable choices for healthcare professionals.



PR083



PR686



PR691

Camellia

PR686 Feature Zip Tunic

- Flattering feminine fit with bust and back darts, Cross over neckline, Pull-on style with front feature zip
- 100% Polyester, 185gsm
- Sizes: 2XS/6 – 5XL/24
- 1 colour



BLACK & BLACK

Ivy

PR691 Contrast Neck Tunic

- Flattering feminine fit with bust and back darts, Crossover neckline with contrast coloured trim, Pull-on style with back zip fastening
- 100% Polyester, 185gsm
- Sizes: 2XS/6 – 5XL/24
- 4 colours



STRAWBERRY RED & BLACK

HOT PINK & BLACK

PURPLE & BLACK

TURQUOISE & BLACK

EASY CARE

40°



PR683

PREMIER
UNIFORMS THAT WORK FOR YOU

Blossom

PR683 Asymmetric Button Tunic

- Flattering feminine fit with bust and back darts, Mandarin collar, Concealed zip through fastening and press stud
- 100% Polyester, 185gsm
- Sizes: 2XS/6 – 5XL/24
- 7 colours



BLACK

DARK GREY

WHITE

NAVY

PURPLE

HOT PINK

STRAWBERRY RED

40°

EASY CARE

Orchid

PR692 Beauty & Spa Tunic • Flattering feminine fit with bust and back darts, Mandarin collar, Eight 'bar' button fastening • 100% Polyester, 185gsm • Sizes: 2XS/6 – 5XL/24 • 12 colours



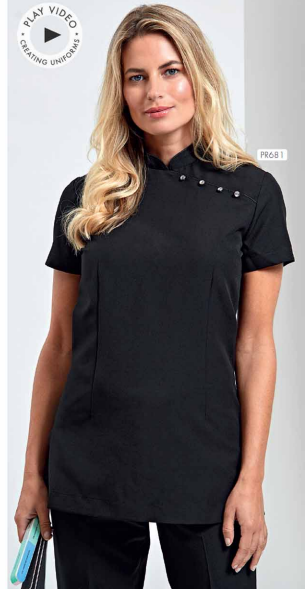
12

Colours



Rose

PR690 Wrap Satin Trim Tunic • Flattering feminine fit with bust and back darts, Satin trim creating the illusion of a wrap tunic, Pull-on style with back zip fastening • 100% Polyester, 185gsm • Sizes: 2XS/6 – 5XL/24 • 1 colour



Mika

PR681 Feature Button Tunic • Flattering feminine fit with bust and back darts, Four sparkly feature buttons embellished on the trim, Pull-on style with back zip fastening • 100% Polyester, 185gsm • Sizes: 2XS/6 – 5XL/24 • 1 colour



STRAIGHT
FIT

PR536

PLAY VIDEO
CREATING UNIFORM

PR688

Iris

PR536 Women's Straight Leg Trouser • Trouser with a deep waistband, YKK fastening zip, Cross over waistband with two button fastening • 100% Polyester, 185gsm • Sizes: XS/8 – 5XL/24, Regular leg 31"/79 cm, *Long leg 34"/86 cm • 3 colours



BLACK

HEATHER BLACK

HEATHER GREY

Viola

PR688 Linen-Look V-Cut Beauty Tunic • Open pockets to the sides, Round neck with v-cut, Concealed zip back • 100% Polyester, 160gsm • Sizes: XS/8 – 5XL/24 • 2 colours

HEATHER GREY

HEATHER BLACK



40' EASY CARE

PLAY VIDEO
CREATING UNIFORM

PR685



PREMIER
UNIFORMS THAT WORK FOR YOU

Verbena

PR685 Linen-Look Button-Up Beauty Tunic • Banded style collar, Buttoned placket, Three quarter sleeves • 100% Polyester, 160gsm • Sizes: XS/8 – 5XL/24 • 2 colours



LINEN-LOOK FABRIC



HEATHER GREY



HEATHER BLACK

Salon Essentials



PR115 Waterproof Bib Apron • Adjustable buckle on neckband, Waterproof and bleach resistant, 90cm self fabric ties • 100% Polyester with Polyurethane coating, 110gsm • 8 colours



PR116 Waterproof Salon Gown • Suitable for salons and barbers, 145cm long by 123cm wide, Waterproof and bleach resistant, Adjustable tear release fastening at the back • 100% Polyester with Polyurethane coating, 110gsm • 2 colours



Waterproof, bleach resistant salon gowns

PR117 Long Sleeve Waterproof Salon Gown • Waterproof and bleach resistant for use in salons and barbers, Elasticated cuffs, Adjustable tear release fastening • 100% Polyester with Polyurethane coating, 110gsm • 1 colour



Healthcare Uniforms

PR605 'Daisy' Healthcare Tunic • V-neck styling, Concealed zip fastening with press stud, Two curved front pockets, Contrast trim on neckline, sleeves and pockets • 65% Polyester, 35% Cotton, 195gsm • Sizes: XS/8 – 5XL/24 • 2 colours



PR605



PR514 'Poppy' Healthcare Trousers • Cross over waistband with two button fastening, Zip fly, Belt loops, Two slanted front pockets • 65% Polyester, 35% Cotton, 195gsm • Sizes: XS/8 – 5XL/24 • 1 colour



PR514

OEKO-TEX®
STANDARD 100
by Hohenstein

85

PR604 'Vitality' Healthcare Tunic • Soft collar styling, Concealed zip fastening and press stud, Two slanted front pockets, Contrast trim on neckline, sleeves and pockets • 65% Polyester, 35% Cotton, 195gsm • Sizes: XS/8 – 5XL/24 • 3 colours



PR604



85

SIZING

MODERN
FIT

TAILORED
FIT

CLASSIC
FIT

Slim
Fit

PREMIER
UNIFORMS THAT WORK FOR YOU

WOMEN'S SHIRTS / POLOS / TEES / KNITWEAR / CHEF'S JACKETS / BEAUTY TUNICS & OUTERWEAR

Coll size	2XS	XS	S	M	L	XL	2XL	3XL	4XL	5XL	6XL	7XL	8XL
Size	6	8	10	12	14	16	18	20	22	24	26	28	30
Bust to fit *	31	33	35	37	39	41	43	45	47	49	51	53	55
Bust to fit cm	79	84	89	94	99	104	109	114	119	124	129	134	139

WOMEN'S WAISTCOATS - PR621, PR623 & PR626

Coll size	2XS	XS	S	M	L	XL	2XL
Size	6	8	10	12	14	16	18
Bust to fit *	27	29	32	34	37	40	44
Bust to fit cm	72	80	88	96	104	112	120

WOMEN'S TROUSERS, CHINOS & SHORTS - PR514, PR530, PR536, PR570 & PR572

Coll size	XS	S	M	L	XL	2XL	3XL	4XL	5XL
Size	8	10	12	14	16	18	20	22	24
Waist to fit *	24	26	28	30	32	34	36	38	40
Waist to fit cm	59	64	69	74	79	84	89	94	99

MEN'S COLLARED SHIRTS

PR200, PR202, PR204, PR207, PR209, PR210, PR212, PR234 & PR236

Coll size	S	S/M	M	M/L	L	L/XL	XL	XL/2XL	2XL	2XL/3XL	3XL	4XL	5XL	6XL
Collar "	14½	15	15½	16	16½	17	17½	18	18½	19	20	21	22	23
Collar cm	37	38	39½	41	42	43	44½	46	47	48	50	52	54	56
Chest to fit *	34	36	38	40	42	44	46	48	50	52	54	58	62	66
Chest to fit cm	87	92	96	102	107	111	117	122	127	132	137	147	157	167

MEN'S SOFT COLLARED SHIRTS, TEES, CHEF'S JACKETS, KNITWEAR & ARTISAN FLEECES

PR206, PR217, PR218, PR219, PR220, PR221, PR222, PR238, PR244, PR246, PR247, PR250, PR262, PR264, PR268, PR649, PR803 & PR823

Coll size	2XS	XS	S	M	L	XL	2XL	3XL	4XL	5XL
Chest to fit *	28	30	34	38	42	46	50	54	58	62
Chest to fit "	74	77	87	96	107	117	126	136	146	156

MEN'S WAISTCOATS - PR620, PR622 & PR625

Coll size	2XS	XS	S	M	L	XL	2XL
Chest to fit *	30	32	36	40	44	46	52
Chest to fit cm	66	76	86	96	106	116	126

STUDDO POLO, COOLPLUS POLO, SPUN DYED POLO, ESSENTIAL POLOS, ZIP-THROUGH SWEAT, SOFTSHELLS & RECYCLED LIGHTS - PR612, PR630, PR631, PR695, PR697, PR698, PR610, PR611, PR614 & PR617

Coll size	XS	S	M	L	XL	2XL	3XL	4XL	5XL	6XL
Chest to fit *	33	35	38	41	44	47	50	53	56	59
Chest to fit cm	83	89	96	104	112	119	122	134	142	150

MEN'S COOLCHECKER POLO SHIRTS - PR615, PR617 & PR618

Coll size	XS	S	M	L	XL	2XL	3XL	4XL	5XL
Chest to fit *	33	35	37	39	41	44	46	48	51
Chest to fit cm	83	89	94	99	104	112	116	122	130

STUDDO POLO SHIRT - PR610

Coll size	S	M	L	XL	2XL	3XL
Chest to fit *	34	38	42	46	50	52
Chest to fit cm	92	100	108	116	124	132

MEN'S TROUSERS, CHINOS & SHORTS - PR520, PR560, PR562 & PR564

Coll size	XS	S	M	L	XL	2XL	3XL	4XL
Waist to fit *	30	32	34	36	38	40	42	44
Waist to fit cm	76	80	86	92	96	100	106	110

UNISEX CHEF'S TROUSERS - PR552, PR553, PR564, PR565 & PR566

Coll size	XS	S	M	L	XL	2XL	3XL	4XL
Waist to fit *	28-30	32-34	34-36	36-38	38-40	42-44	44-46	46-48
Waist to fit cm	71-76	81-86	86-91	91-96	96-101	106-111	111-116	116-126

