



UNISEX HOODIE SWEATSHIRTS
SIDER



STSU824

The unisex side pocket hoodie sweatshirt

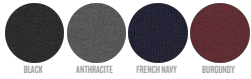
Brushed Sweatshirt
85% Organic ring-spun combed cotton, 15% Recycled polyester
300 GSM

- Raglan sleeve
- Double layered hood in self fabric
- Round drawcords in matching body colour with metal tipping
- Metal eyelets
- Inside herringbone back neck tape
- Self fabric half moon at back neck
- Slanted side seams with pockets
- 1x1 rib at sleeve hem and bottom hem
- Flatlock topstitch on all seams

WHITES



COLORS



ESSENTIAL
HEATHERS



SPECIAL
HEATHERS



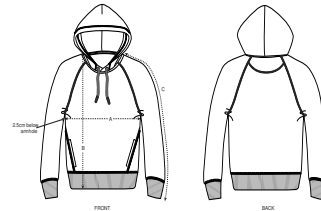
**Size available on limited number of colours*

Please check our webshop for latest information

MEDIUM FIT

XS	S	M	L	XL	XXL	XXXL*	XXXXL*
----	---	---	---	----	-----	-------	--------

Size guide

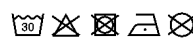


SIZES		XS	S	M	L	XL	XXL	XXXL	XXXXL
A	Half Chest	49	51.5	54	57	60	63	66	71
B	Body Length	65	68	72	74	76	78	80	82
C	Sleeve Length	69.5	75	79	80.5	82	83.5	83.5	83.5

Printing Specifications

For suitable print techniques, please download our printing guide

Wash similar colours together, do not iron on print, wash and iron inside out.



STANLEY/STELLA