



WOMEN CREW NECK SWEATSHIRTS  
**STELLA TRIPSTER**



STSW146

**The iconic women's crew neck sweatshirt**

Terry Sweatshirt  
85% Organic ring-spun combed cotton, 15% Recycled polyester  
350 GSM

- Raglan sleeve
- 1x1 rib at neck collar, sleeve hem and bottom hem
- Inside herringbone back neck tape
- Self fabric half moon at back neck
- Single needle topstitch at neck collar
- Sleeve hem and bottom hem with twin needle topstitch

**WHITES**



NATURAL RAW

**COLORS**



BLACK ANTHRACITE KHAKI MAJORELLE BLUE FRENCH NAVY PINK PUNCH RED BURGUNDY COTTON PINK

**ESSENTIAL HEATHERS**



DARK HEATHER GREY MID HEATHER GREY HEATHER GREY CREAM HEATHER GREY HEATHER SAND MID HEATHER GREEN MID HEATHER BLUE CREAM HEATHER PINK

**SPECIAL HEATHERS**



HEATHER ASH HEATHER SNOW BLACK HEATHER HEATHER CRANBERRY

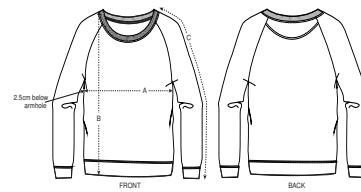
*\*Size available on limited number of colours*

*Please check our webshop for latest information*

**MEDIUM FIT**

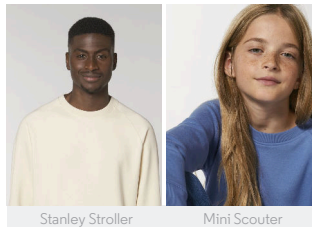
XS	S	M	L	XL	XXL*
----	---	---	---	----	------

**Size guide**



SIZES		XS	S	M	L	XL	XXL
A	Half Chest	47.5	50	53	56	59	62
B	Body Length	61	63	65	67	68	69
C	Sleeve Length	69	71	72.5	73.8	75	76.2

**Combo options**



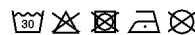
Stanley Stroller

Mini Scouter

**Printing Specifications**

For suitable print techniques, please download our printing guide

Wash similar colours together, do not iron on print, wash and iron inside out.



**STANLEY/STELLA**